

122 ton·meter loopkatkraan op rupsonderstel

Potain GTMR 366 A

Algemene gegevens

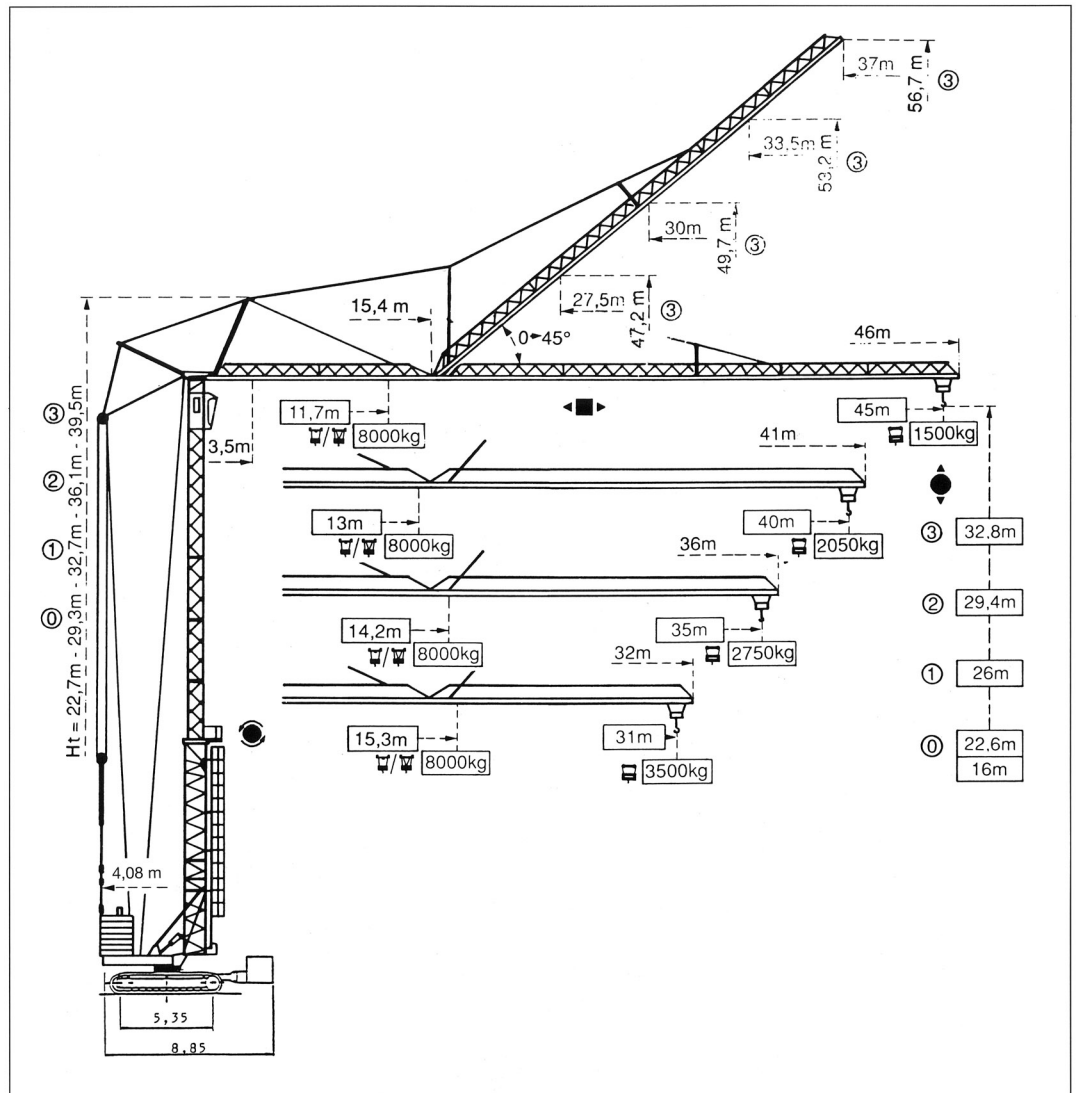
Eigen gewicht
83 ton

Draaicirkel ballast
4,08 m

Rijbreedte
5,90 m

Gronddruk
0,85 kg/cm²

Generator
75 KVA

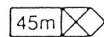


Heftabel



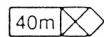
Gieklengte

3,5	→	11,7	15	17	19	21	23	25	27	29	31	33	35	37	38	40	42	45	m
♣/♣		8000	5780	4920	4260	3740	3320	2980	2690	2440	2230	2050	1880	1740	1680	1550	1440	1300	kg



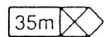
45m	→	3,5	→	20,7	23	25	27	29	31	33	35	37	38	40	42	45	m
♣				4000	3520	3180	2890	2640	2430	2250	2080	1940	1880	1750	1640	1500	kg

3,5	→	13	15	17	19	21	23	25	27	29	31	33	35	37	38	40	m
♣/♣		8000	6650	5670	4930	4340	3860	3470	3140	2860	2620	2410	2230	2060	1990	1850	kg



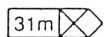
40m	→	3,5	→	23,3	25	27	29	31	33	35	37	38	40	m
♣				4000	3670	3340	3060	2820	2610	2430	2260	2190	2050	kg

3,5	→	14,2	15	17	19	21	23	25	27	29	31	33	35	m
♣/♣		8000	7480	6390	5560	4900	4370	3940	3570	3260	2990	2760	2550	kg



35m	→	3,5	→	25,7	27	29	31	33	35	m
♣				4000	3770	3460	3190	2960	2750	kg

3,5	→	15,3	17	19	21	23	25	27	29	31	m
♣/♣		8000	6990	6090	5380	4800	4330	3930	3590	3300	kg

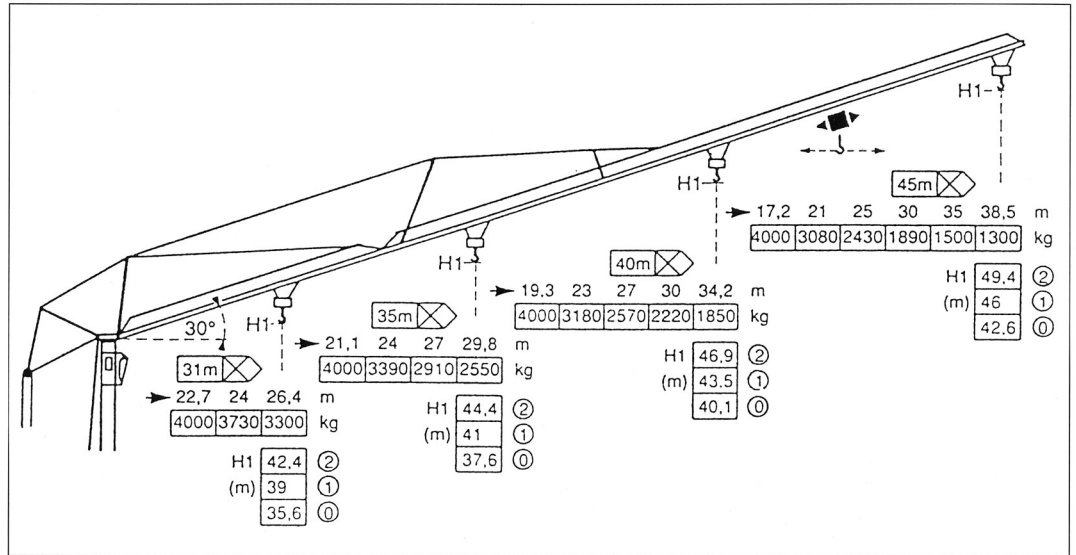


31m	→	3,5	→	27,7	29	30	31	m
♣				4000	3790	3640	3500	kg

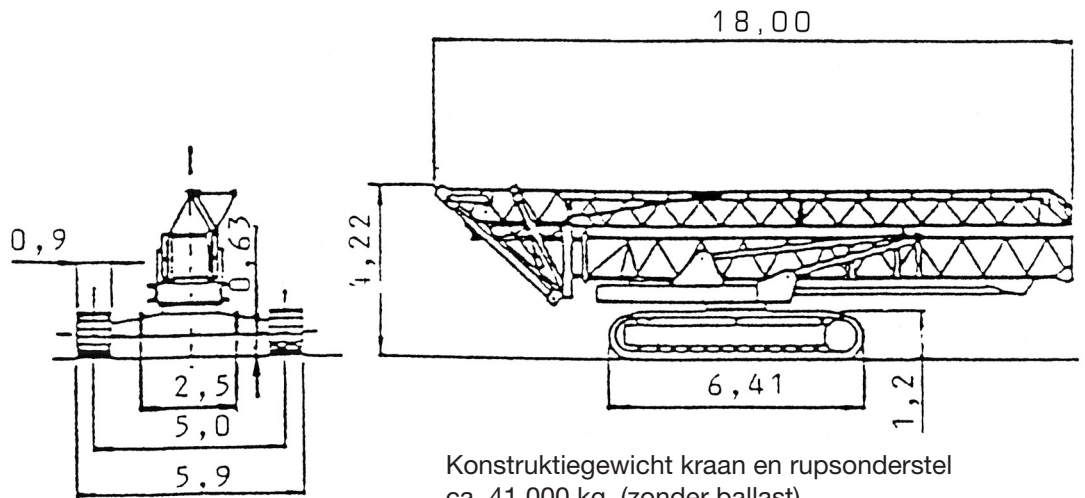
122 ton·meter loopkatkraan op rupsonderstel

Potain GTMR 366 A

Opgetopt



Opmerking:
Rijden met of zonder last,
afhankelijk van de uitvoe-
ring



Konstruktiegewicht kraan en rupsonderstel
ca. 41.000 kg. (zonder ballast)